



India Meteorological Department  
(Ministry of Earth Sciences)

**BULLETIN NUMBER: 22 (BOB/04/2021)**

**TIME OF ISSUE: 0050 HOURS IST**

**DATED: 28.09.2021**

**FROM: INDIA METEOROLOGICAL DEPARTMENT (FAX NO. 24643965/24699216/24623220)**

**TO: CONTROL ROOM, NDM, MINISTRY OF HOME AFFAIRS (FAX.NO. 23093750)  
CONTROL ROOM NDMA (FAX.NO. 26701729)  
CABINET SECRETARIAT (FAX.NO.23012284, 23018638)  
PS TO HON'BLE MINISTER FOR S & T AND EARTH SCIENCES (FAX NO.23316745)  
SECRETARY, MOES, (FAX NO. 24629777)  
H.Q. (INTEGRATED DEFENCE STAFF AND CDS) (FAX NO. 23005137/23005147)  
DIRECTOR GENERAL, DOORDARSHAN (23385843)  
DIRECTOR GENERAL, AIR (23421105, 23421219)  
PIB MOES (FAX NO. 23389042)  
UNI (FAX NO. 23355841)  
D.G. NATIONAL DISASTER RESPONSE FORCE (NDRF) (FAX NO. 26105912, 2436 3260)  
DIRECTOR, PUNCTUALITY, INDIAN RAILWAYS (FAX NO. 23388503)  
CHIEF SECRETARY, ANDHRA PRADESH (FAX NO. 0863-2441029, 08645-246600)  
CHIEF SECRETARY, TELANGANA (FAX NO. 040-23453700)  
CHIEF SECRETARY, CHATTISGARH (FAX NO 0771-2221206)  
CHIEF SECRETARY, MAHARASHTRA (FAX NO 022-22028594)  
CHIEF SECRETARY, GUJARAT (FAX NO 079-23250305)  
CHIEF SECRETARY, DAMAN ,DIU,DADRA & NAGAR HAVELI (FAX NO 0260-2230775)  
CHIEF SECRETARY, MADHYA PRADESH (FAX NO 755-2441076)  
CHIEF SECRETARY, KARNATAKA (FAX NO 08022258913)**

**Sub: Depression (remnant of Cyclonic Storm 'GULAB') over north Telangana and adjoining Vidarbha.**

The Depression over north Telangana and adjoining south Chattisgarh and Vidarbha moved west-northwestwards with a speed of 13 kmph during last 06 hours and lay centered at 2330 hrs IST of 27<sup>th</sup> September 2021 over north Telangana and adjoining Vidarbha near Lat. 18.7°N and Long. 79.4°E, about 135 km east of Nizamabad (Telangana) and 270 km south-southeast of Nagpur Sonegaon (Vidarbha).

It is likely to move west-northwestwards and weaken into a Well Marked Low Pressure Area during next 12 hours. The system is likely to emerge into northeast Arabian Sea and adjoining Gujarat coast around 30<sup>th</sup> September evening and there is likelihood for the system to further intensify over northeast Arabian Sea during the subsequent 24 hours.

**Warnings:**

**(i) Rainfall**

- Light to moderate rainfall at most places with **heavy to very heavy & extremely heavy falls at isolated places** very likely over Telangana, Marathwada Vidarbha, heavy to very

heavy falls at isolated places over North Interior Karnataka, Madhya Maharashtra and heavy falls at isolated places over south Chhattisgarh, Rayalaseema and West Madhya Pradesh during next 12 hours.

- 28<sup>th</sup> Sept.: Light to moderate rainfall at most places with **heavy to very heavy & extremely heavy falls at isolated places** very likely over Konkan & Goa, Madhya Maharashtra and Gujarat region; heavy to very heavy falls at isolated places over Marathwada and Saurashtra & Kutch and heavy rainfall at isolated places over West Madhya Pradesh and Vidarbha.
- 29<sup>th</sup> Sept.: Light to moderate rainfall at most places with **heavy to very heavy & extremely heavy falls at isolated places** very likely over Saurashtra & Kutch and heavy to very heavy falls at isolated places over Gujarat region and Konkan.

**(ii) Wind warning**

- Squally wind, speed reaching 35-45 kmph gusting to 55 kmph, is likely to prevail over north Telangana and adjoining districts of Vidarbha & south Chattisgarh during next 12 hours and decrease thereafter.

**(vii) EXPECTED IMPACT & ACTION SUGGESTED due to Strong winds & very Heavy/Extremely heavy Rainfall.**

- Partial Damage to thatched huts.
- Minor damage to power and communication lines due to breaking of branches and uprooting of trees.
- Major damage to Kutcha and minor damage to Pucca roads.
- Localized Flooding of roads, inundation and water logging in low lying areas and closure of underpasses mainly in urban areas of the above region.
- Occasional reduction in visibility due to heavy rainfall.
- Disruption of traffic in cities due to water logging in roads.
- Possibilities of damage to vulnerable structure.
- Localized Landslides/Mudslides
- Damage to standing crops and horticulture including paddy, banana, papaya trees and orchards due to inundation and strong winds.
- It may lead to riverine flooding in some river catchments (for riverine flooding please visit Web page of CWC)

**Action Suggested.**

- Avoid staying in vulnerable structure.
- Avoid going to areas that face the water logging problems often.
- Check for traffic congestion on your route before leaving for your destination.
- Follow any traffic advisories that are issued in this regard.
- Follow IMD warnings for updates

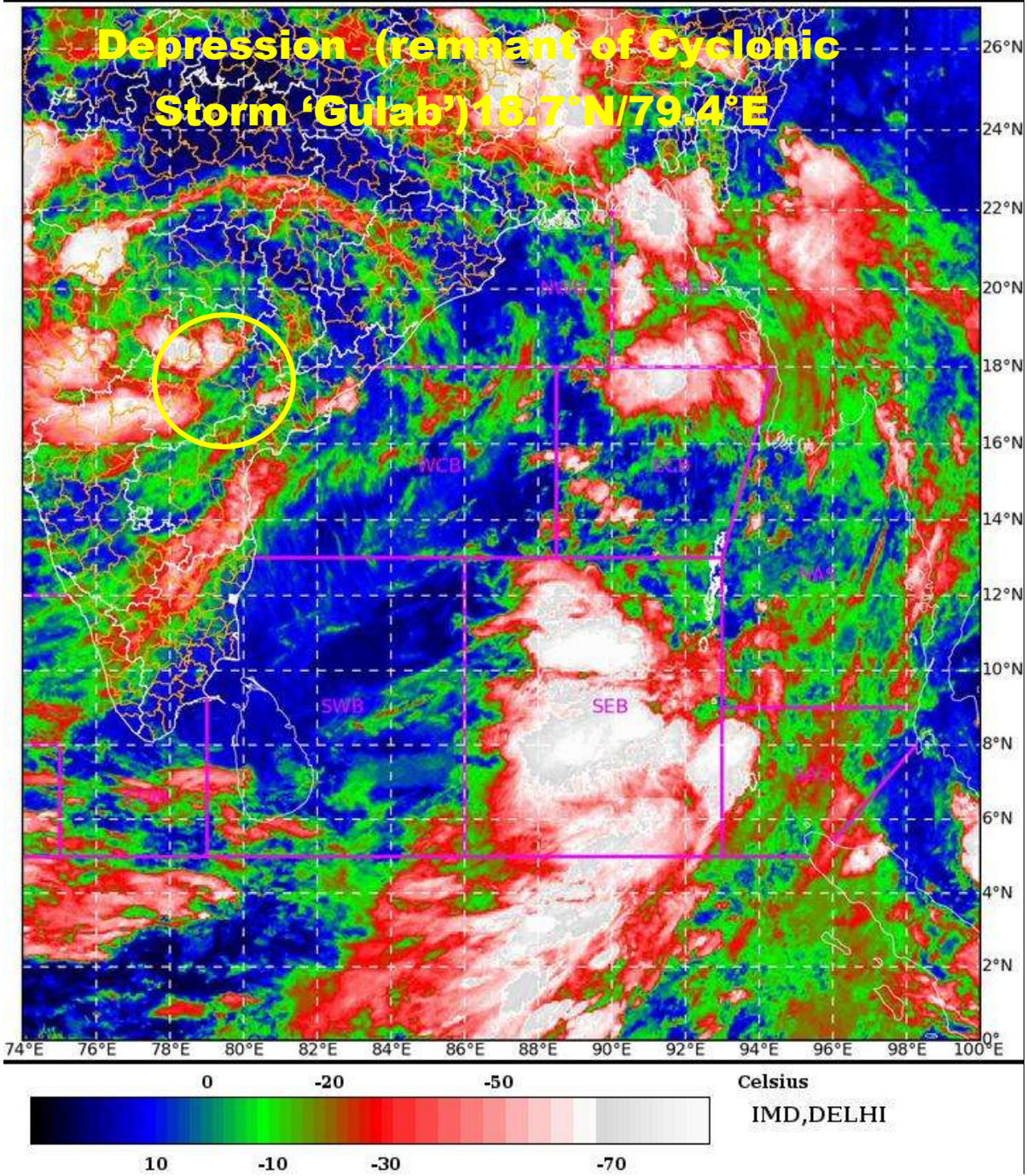
**(Surendra Pratap Singh)**  
**Scientist-C, RSMC, New Delhi**

**Next bulletin will be issued at 0830 hrs IST of today, the 28<sup>th</sup> September, 2021.**

*Copy to: ACWC Kolkata/ Chennai/CWC Bhubaneswar/CWC Visakhapatnam/MC Ranchi/MC Hyderabad/MC Raipur*

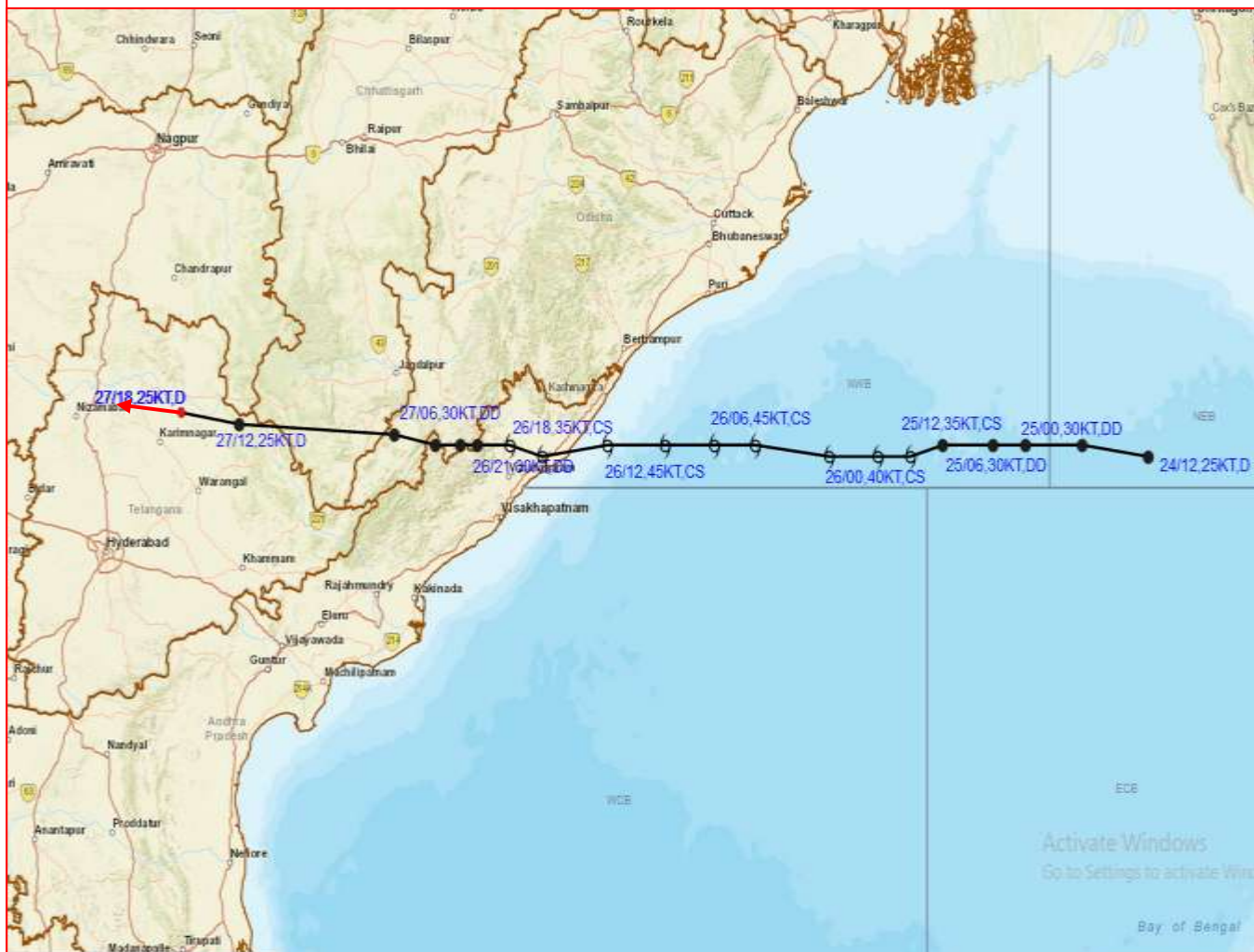
<p><b>LEGEND: Heavy Rainfall:</b> 64.5 to 115.5mm, <b>Very Heavy Rainfall:</b> 115.6 to 204.4mm, <b>Extremely Heavy Rainfall:</b> 204.5mm or more. <b>Many Places:</b> 51% to 75% of the stations, <b>Most Places:</b> more than 76% of total stations, <b>Isolated Places:</b> Less than 25% of total stations</p>
---

SAT : INSAT-3DR IMG      27-09-2021/(1645 to 1712) GMT  
IMG\_TIR1\_TEMP 10.8 um    27-09-2021/(2215 to 2242) IST  
L1C Mercator





## OBSERVED AND FORECAST TRACK OF DEPRESSION (REMNANT OF CYCLONIC STORM GULAB) OVER NORTH TELANGANA AND ADJOINING VIDARBHA BASED ON 1800 UTC OF 27<sup>TH</sup> SEPTEMBER, 2021



DATE/TIME IN UTC

IST=UTC + 0530

L: LOW PRESSURE AREA

WML: WELL MARKED LOW PRESSURE AREA

D: DEPRESSION (17-27 KT)

DD: DEEP DEPRESSION (28-33 KT)

CS: CYCLONIC STORM (34-47 KT)

SCS: SEVERE CYCLONIC STORM (48-63KT)

VSCS: VERY SEVERE CYCLONIC STORM (64-89 KT)

ESCS: EXTREMELY SEVERE CYCLONIC STORM (90-119 KT)

SuCS: SUPER CYCLONIC STORM ( $\geq 20$  KT)

- LESS THAN 34 KT
- ⊙ 34-47 KT
- ⊙  $\geq 48$  KT
- OBSERVED TRACK
- FORECAST TRACK
- ▲ CONE OF UNCERTAINTY

### Sub-division wise heavy rainfall warning for next 5 days

